



Laser SB3 Pre-World Open

12 May – 13 May 2011

Organising authority
Royal Torbay Yacht Club



SAILING INSTRUCTIONS

ALL TIMES ARE BRITISH SUMMER TIME (BST)

1. Rules

- 1.1 The regatta shall be governed by the rules as defined in the racing rules of sailing.
- 1.2 If there is a conflict between languages the English text will take precedence.

2. Notices to Competitors

Notices to competitors will be posted on the official notice board located near the race office in the Royal Torbay Yacht Club.

3. Changes in Sailing Instructions

Any change to the sailing instructions will be posted before 0900 on the day it will take effect, except that any change to the schedule of races will be posted by 2100 on the day before it will take effect.

4. Signals Made Ashore

- 4.1 Signals made ashore will be displayed on the flag pole situated at the inshore end of Haldon Pier.
- 4.2 Flag V with 2 sound signals (1 when lowered) means that no boat shall leave its berth until this signal is lowered. The first warning signal will not be made less than 60 minutes after V is lowered.
- 4.3 When flag AP is displayed ashore, '1 minute' is replaced with 'not less than 60 minutes' in race signal AP.

5. Schedule of Races

5.1 Dates of racing:

Thursday 12 May 2 Races are scheduled.
First warning signal 1355.
The warning signal for each succeeding race will be made as soon as practicable.

Friday 13 May: 3 Races are scheduled.
First warning signal 1030.
The warning signal for each succeeding race will be made as soon as practicable.
One extra race may be sailed providing the change is made according to instruction 3.

- 5.2 After a long postponement, to alert boats that a race or sequence of races will begin soon, an orange flag will be displayed with one sound for at least 4 minutes before a warning signal is displayed.

6. Class Flag

The class flag will be numeral pennant 1.

7. Racing Area

The course will be laid in Torbay and Attachment 1 shows the racing area.

8. The Course

- 8.1 Attachment 2 shows the course format, the order in which marks are to be passed, and the side on which each mark is to be left. It is not to scale.
- 8.2 At the leeward gate, boats shall sail between the gate marks from the direction of the previous mark and round either gate mark.
- 8.3 Mark 2 is only a mark of the course on round 1, though it may still be in place on round 2.
- 8.4 Not later than the warning signal, the committee boat may display the approximate compass bearing of the first leg.
- 8.5 The course may be shortened provided two or more legs have been sailed (excluding the leg between mark 1 and mark 2).

9. **Marks**

- 9.1 Marks 1, 3P and 3S will be orange inflated cylindrical buoys. Mark 2 will be a smaller yellow buoy.
- 9.2 The change of course mark referred to in instruction 12 will be a yellow inflated cylindrical buoy.
- 9.3 The starting marks will be race committee boats displaying orange flags at the starboard and port ends of the starting line.
- 9.4 The finishing mark will be a dan buoy displaying a blue flag.

10. **The Start**

- 10.1 The starting line will be between a staff displaying an orange flag on the race committee starting boat at the starboard end and a staff displaying an orange flag on the mark boat at the port end.
- 10.2 A boat starting later than 4 minutes after the starting signal will be scored Did Not Start without a hearing. This changes rules A4 and A5
- 10.3 The first two starts of the day may be general recalls to give starting practise. This amends rule 29.2.

11. **Starting Penalties – Black Flag Rule**

- 11.1 Rule 30.3 is supplemented as follows:
If a general recall is signalled, the race committee may display bow numbers in place of sail numbers. This changes rule 30.3. Numbers will be displayed for at least 3 minutes. A long sound signal will be made when the numbers are initially displayed. A boat whose number is so displayed shall leave the racing area before the new preparatory signal. If she fails to do so, she will be scored DNE. This instruction changes rule 63.1. The race committee may also broadcast numbers on VHF channel 72.
- 11.2 Before the starting signal, the racing area is defined as the area within 100 metres of the start line. After the starting signal, the racing area is the area within an imaginary line drawn 100 metres outside any point where a boat might sail during normal racing and includes the area bounded by marks 1 and 2 at all times when any boat is still racing.

12. **Change of the next leg of the Course**

To change the next leg of the course, the race committee will lay a new mark (or move the finishing line) and remove the original mark as soon as practicable. When in a subsequent change a new mark is replaced, it will be replaced by an original mark.

13. **The Finish**

13.1 The finishing line will be between a staff displaying a blue flag on the race committee boat and the finishing mark.

13.2 The course may be shortened by the display of flag T at the gate accompanied by repetitive sound signals. When flag T is so displayed, boats after passing through the gate shall sail to the finishing line to finish. This changes racing signals and rule 32. Flag T will also be displayed on the race committee boat positioned on the finishing line.

14. Penalty System

Rules 44.1 and 44.2 are changed so that only one turn, including one tack and one gybe, is required.

15. Time Limits

Boats failing to finish within 15 minutes after the first boat sails the course and finishes will be scored Did Not Finish. This changes rule 35, A4 and A5.

16. Protests & Requests for Redress

16.1 Protest forms are available at the race office. Protests and requests for redress or reopening shall be delivered there within the appropriate time limit.

16.2 The protest time limit is 60 minutes after the last boat has finished the last race of the day.

16.3 Notices will be posted no later than 30 minutes after the protest time limit to inform competitors of hearings in which they are parties or named as witnesses. Hearings will be held in the protest room, located on the ground floor of the Royal Torbay Yacht Club.

16.4 Notices of protests by the race committee or protest committee will be posted to inform boats under rule 61.1(b) within the time limit stated in instruction 16.2.

16.5 Breaches of instructions 4.2, 18.2, 20, 22, 23 and 24 will not be grounds for a protest by a boat. This changes 60.1(a). Penalties for these breaches may be less than disqualification if the protest committee so decides. The scoring abbreviation for a discretionary penalty imposed under this instruction will be DPI.

16.6 On the last scheduled day of racing a request for reopening shall be delivered

- a) within the protest time limit if the requesting party was informed of the decision on the previous day;
- b) no later than 30 minutes after the requesting party was informed on the decision on that day.

This changes rule 66.

16.7 On the last scheduled day of racing a request for redress based on a protest committee decision shall be delivered no later than 30 minutes after the decision was posted. This changes rule 62.2.

17. Scoring

17.1 Two races are required to be completed to constitute a series.

17.2 When fewer than four races have been completed, a boat's series score will be the total of her race scores.

17.3 When five or more races have been completed, a boat's series score will be the total of her race scores excluding her worst score.

17.4 To request correction of an alleged error in posted race or series results, a boat may complete a scoring enquiry form available at the race office and submit to the race office within 1 hour of race or series results being posted.

18. Safety Regulations

- 18.1** Rule 40 will apply to each competitor at all times except when boats are made fast in their berths. This changes rule 40.
- 18.2** A boat that retires from a race shall notify the race committee as soon as possible.

19. Right to Use Name and Likeness.

The media rights belong exclusively to Royal Torbay Yacht Club and Laser SB3 World Council. By participating in this event a competitor automatically grants to the Organising Authority and its sponsors the right in perpetuity to make, use and show, from time to time at their discretion, any motion pictures and live, taped or filmed television and other reproductions of him or her during the period of the competition without compensation.

The participants also undertake not to allow any act of reproduction, public communication or any distribution of images of the race, without the previous authorisation from the Royal Torbay Yacht Club.

20. Official Boats

- 20.1** Official boats will be identified as follows:

Committee Boat Janick	Royal Torbay Yacht Club
Mark laying boats	Yellow flag with black M
Official patrol boats	Orange flag with black numbers
Press boats	White flag with black P
Competitor's support boats	Orange flag with white numbers

- 20.2** For the first two days of the regatta, an official boat may be on the water offering advice and filming. This does not constitute outside help. This amends rule 41.

21. Support Boats

- 21.1** Except under the direction of the race committee and when participating in rescue operations, coach and support boats shall stay outside a prohibited zone extending 150 metres from any competitor, mark or committee boat from the time of the preparatory signal for a start until all boats have finished or the race committee signals a postponement or abandonment. If a general recall is signalled coach and support boats are not permitted in the prohibited zone.
- 21.2** Competitors affiliated to or associated with a coach or support boat that infringes instruction 21.1 may be penalised (by the addition of points in accordance with rule 44.3(c)) by the protest committee.
- 21.3** Coach and support boats shall be registered at the race office. All support boats must have insurance and ID of the driver. They shall conspicuously display a flag allocated by the organising authority at all times while afloat.

22. Trash Disposal

Boats shall not put trash in the water. Trash may be placed aboard support and race committee boats.

23. Berthing

Boats shall be kept in allocated berthing areas in the harbour.

24. Haul-Out Restrictions

Boats shall not be hauled out during the regatta except with and according to the terms of prior written permission of the race committee. Boats on hydro hoist or dry sail berths must remain in the water during the regatta.

25. Diving Equipment and Plastic Pools

Underwater breathing apparatus and plastic pools or their equivalent shall not be used around boats between the preparatory signal of the first race and the end of the regatta. Consent to under water examination of damage may be granted on application to the race committee.

26. Radio Communication

Except in an emergency, a boat shall neither make radio transmissions while racing nor receive radio communications not available to all boats. This restriction also applies to mobile telephones. The race committee may communicate on VHF channel 72.

27. Prizes

27.1 Prizes will assigned to the first three boats overall.

27.2 Other prizes may be awarded at the discretion of the Race Committee.

28 Disclaimer of Liability

28.1 Royal Torbay Yacht Club, the Laser SB3 UK Class Association and their officers, members and volunteers do not accept liability for loss of life or property, or personal injury or damage caused by or arising out of the 2011 Pre-World Open, and competitors take part in the event entirely at their own risk. (See Notice of Race Clause 13).

28.2 The establishment of the notice of race and the sailing instructions in no way limits or reduces the complete and unlimited responsibilities of competitors being solely and entirely responsible for the management of a boat they are sailing.

28.3 It is the sole responsibility of each nominated skipper to decide to participate in a race or continue racing.

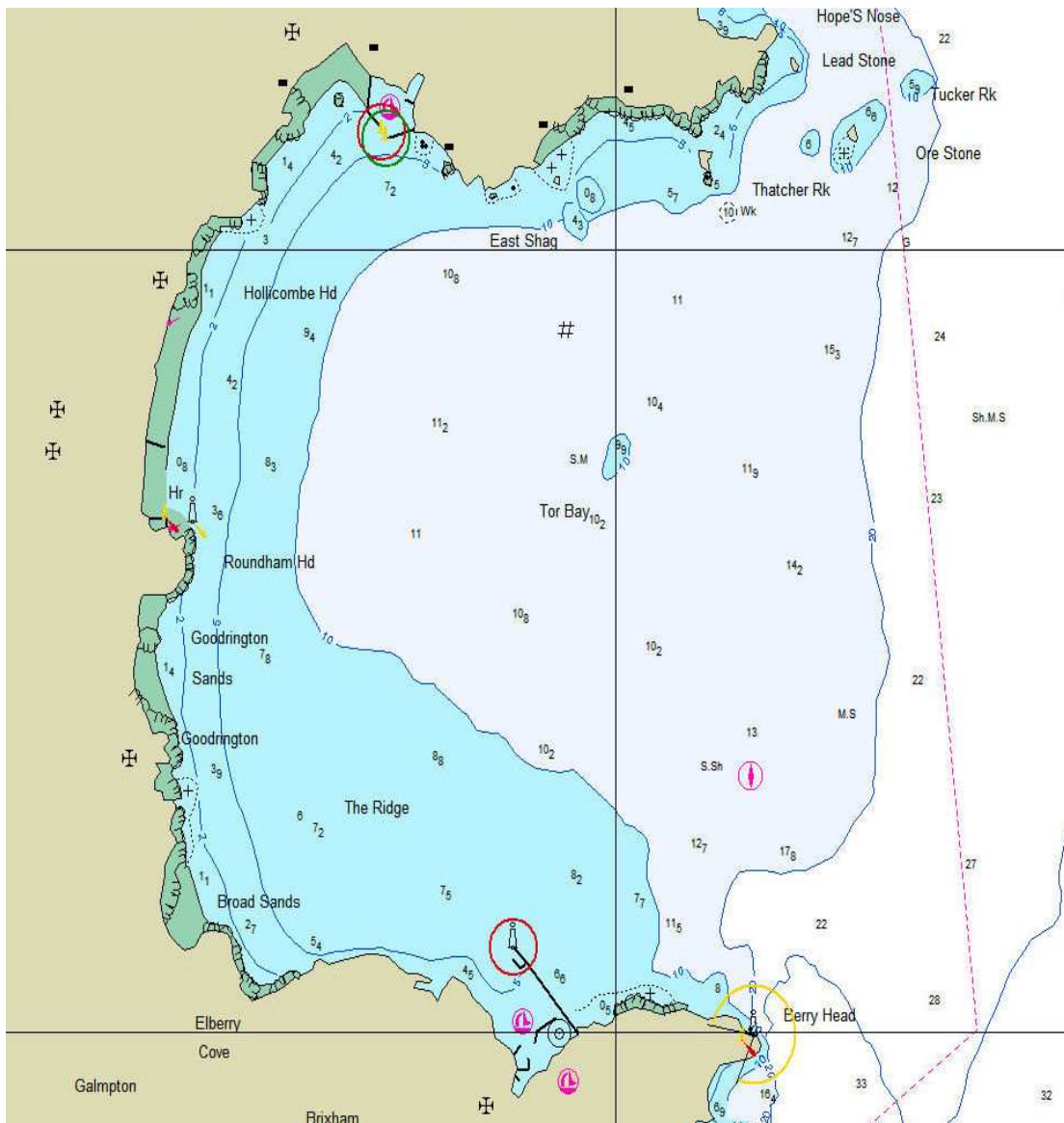
29 Insurance

A skipper is wholly and exclusively responsible for third party liability insurance on the boat that he or she is sailing. A competitor is wholly and exclusively responsible for his or her personal accident and health insurance. (See Notice of Race Clause 14).

Attachment 1 to Sailing Instructions

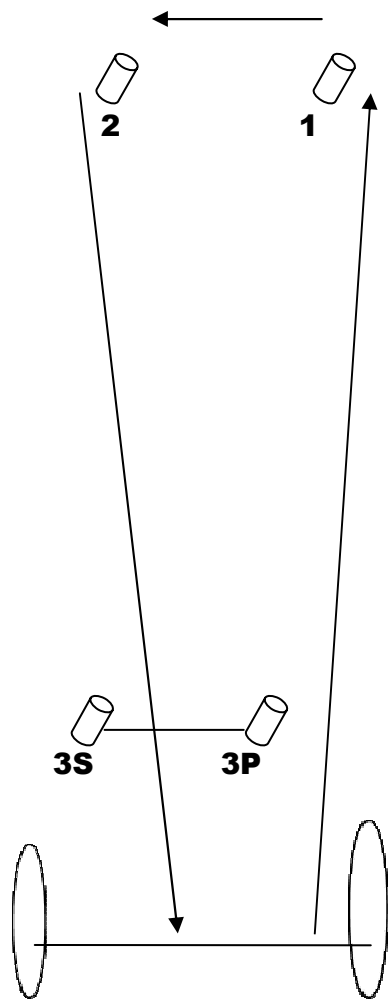
Racing Area

Not to Scale



Attachment 2 to Sailing Instructions

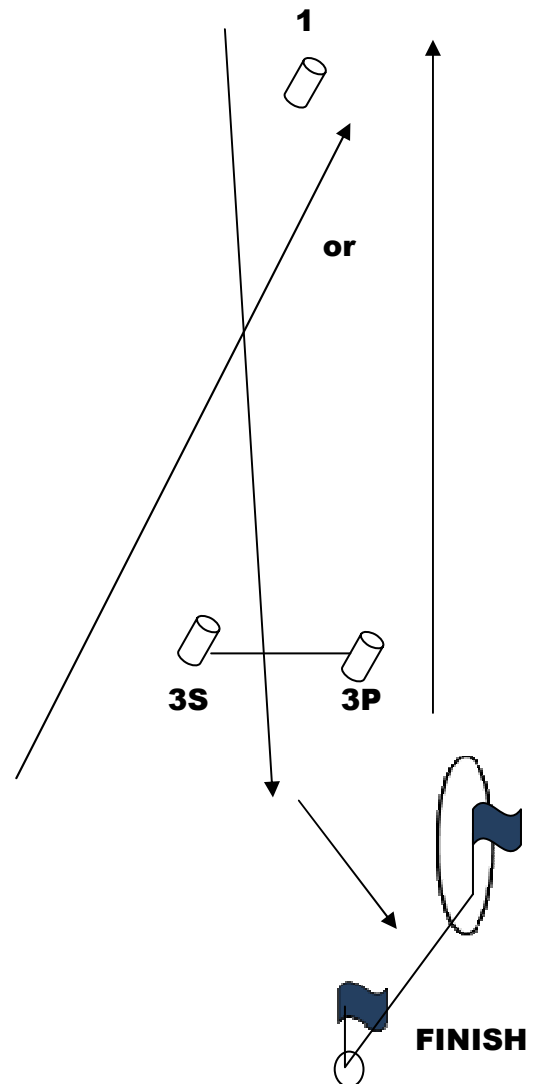
Course Diagram not to scale



START

First Round

Start -1-2-3S or 3P



FINISH

Last Round

1-3P-Finish

Marks 1, 2, 3S and 3P will be yellow inflated cylindrical buoys. The change of course mark referred to in instruction 12 will be an orange inflated cylindrical buoy.

Note: The gate marks 3S and 3P may not be laid until after the start of the race.