



**ZHIK SB3 WORLD CHAMPIONSHIP 2011  
SAILING INSTRUCTIONS**



# **ZHIK SB3 WORLD CHAMPIONSHIP 2011**

**Torbay United Kingdom**

**13<sup>th</sup> – 20<sup>th</sup> May 2011**

**Version 2.3**

The organising authority is the Royal Torbay Yacht Club in conjunction with the Laser SB3 Class World Council.

Host club: Royal Torbay Yacht Club  
Event Website: [www.royaltorbayyc.org.uk](http://www.royaltorbayyc.org.uk)

All times are British Summer Time (BST)

## **SAILING INSTRUCTIONS**

### **1 Rules**

**1.1** The championship will be governed by the rules as defined in The Racing Rules of Sailing.

**1.2** If there is a conflict between languages, the English text shall prevail.

### **2 Additional Identification**

**2.1** Boats may be required to affix a bow number on each side of the hull. The organising authority will supply stickers and instructions for their use. A separate number will be issued to be affixed to trailers

**2.2** While racing, each boat shall display identification to the group to which she has been assigned. Ribbons will be provided and are to be displayed on the backstay.

### **3 Cameras and Electronic Equipment**

Boats may be required to carry cameras, sound equipment or positioning equipment as specified by the organising authority.

### **4 Notices to competitors**

Notices to competitors will be posted on the official notice board located near the race office. The race office is situated in the Royal Torbay Yacht Club and will be open from 0900 to 1800 with a short break at 1200.

### **5 Changes to the Sailing Instructions**

Any change to the sailing instructions will be posted before 0900 on the day it will take effect, except that any change to the schedule of races, will be posted by 2100 on the day before it will take effect.

## **6 Signals made ashore**

**6.1** Signals made ashore will be displayed on the flag pole situated at the inshore end of Haldon Pier.

**6.2** Flag V with 2 sound signals (1 when lowered) means that no boat shall leave its berth until this signal is lowered. The first warning signal will be made not less than 60 minutes after V is lowered.

**6.3** When flag AP is displayed ashore, "1 minute" is replaced with "no less than 60 minutes" in the Race Signal AP.

**6.4** When a signal is displayed below Numeral Pennant 1 it applies to course 'A' (yellow) or below Numeral Pennant 2 it applies to course 'B' (orange).

## **7 Measurements**

A boat or its equipment may be inspected at any time for compliance with the class rules and sailing instructions. A boat can be instructed by a race committee appointed measurer or a member of the jury to proceed immediately to a designated area for inspection.

## **8 Format of Racing**

**8.1** The fleet will be divided into two coloured groups and will sail a qualifier and final series. The groups will race on 2 separate courses designated course A (yellow) and course B (orange).

**8.2** For the qualifying series boats will be assigned to groups YELLOW or ORANGE of, as nearly as possible, equal size and ability. The YELLOW group will race on course A and the ORANGE group on course B. The organising authority will make initial assignments. Those assignments will be posted by 1800 on 15 May and will apply to the races held on the first day of the championship. On the second day of the championship boats will be assigned on the basis of their results from the first day of racing and the groups will be posted before 2100 on the first day of racing.

**8.3** Assignments will be based on the scores available at 2000 on the first day of racing regardless of protests or requests for redress not yet decided.

**8.4** If both groups have not completed the same number of races, the series scores for reassignment will be calculated for those races, numbered in order of completion and which have been completed by both groups.

**8.5** The final series will start after two days of racing have been completed, but no later than Thursday, 19 May. After completion of the qualifying series, boats will be assigned to final series Gold and Silver groups on the basis of their qualifying series scores. If at the end of the qualifying series one qualifying group have more race scores than the other, the more recently sailed races will be abandoned so

that all the boats in the qualifying series have the same number of race scores. This changes Rule 32.1.

**8.6** The final-series groups will have, as near as possible, equal size so that the Silver group is not larger than the Gold group. Boats with the best qualifying-series scores will race all the final series races in the Gold group on course A (yellow), boats with the next best qualifying series scores will race in the Silver group on course B (orange).

**8.7** Assignments to Gold or Silver groups will be posted before 2100 on the second day of racing.

**8.8** Any recalculation of qualifying series scores after boats have been assigned to final-series groups will not affect the assignments except that a redress decision may promote a boat to the gold group

## **9 Programme and Schedule of Races**

Date	Time	Event
Friday, 13 May	From 0900 to 1800	Registration and Measurement
Saturday, 14 May	From 0900 to 1800	Registration and Measurement
Sunday, 15 May	From 0900 to 1200	Registration and Measurement
Monday, 16 May	1055 – First Warning Signal – Courses A & B	Qualifying Series Races 1 to 3
Tuesday, 17 May	1055 – First Warning Signal – Courses A & B	Qualifying Series Races 4 to 6
Wednesday, 18 May	1055 – First Warning Signal – Courses A & B	Final Series Races 7 to 9
Thursday, 19 May	1055 – First Warning Signal – Courses A & B	Final Series Races 10 to 12
Friday, 20 May	1055 – First Warning Signal – Courses A & B	Final Series Races 13 & 14

**9.1** The warning signal for each succeeding race will be made as soon as practicable.

**9.2** One extra race per day may be sailed providing the change is made according to instruction 5.

**9.3** On Friday 20th May, no warning signal will be made after 1500.

**9.4** After a long postponement, to alert boats that a race or sequence of races will begin soon, an orange flag will be displayed with one sound. The orange flag will be displayed for at least 4 minutes before a warning signal is displayed.

## 10 Class flags

Class flags used as warning signals will be:

<b>GROUP</b>	<b>FLAG</b>
Course A (yellow)	Numeral Pennant 1
Course B (orange)	Numeral Pennant 2

## 11 Racing Areas

Courses will be laid in Torbay and Attachment 1 shows the racing area.

## 12 The Course

**12.1** Attachment 2 shows the course format for both course A and course B, the order in which marks are to be passed and the side on which each mark is to be left. It is not to scale.

**12.2** At the gate, boats shall sail between the gate marks from the direction of the previous mark and round either gate mark.

**12.3** Not later than the warning signal the committee boat may display the approximate compass bearing of the first leg.

**12.4** The course may be shortened provided 2 or more legs have been sailed (excluding the leg between mark 1 and mark 2).

## 13 Marks

**13.1** Rounding marks will be as described on Attachment 2.

**13.2** The starting marks will be race committee boats at starboard and port ends of the starting line displaying orange flags.

**13.3** The finish mark will be a dan buoy displaying a blue flag

## 14 The Start

**14.1** The starting line will be between a staff displaying an orange flag on the race committee starting boat on the starboard end and the staff displaying an orange flag on the mark boat at the port-end.

**14.2** A boat starting later than 4 minutes after her starting signal will be scored Did Not Start without a hearing. This changes rules A4 & A5.

## **15 Starting Penalties - Black Flag Rule**

### **15.1 Add to rule 30.3:**

If a general recall is signalled, the race committee may display bow numbers in place of sail numbers. This changes rule 30.3. Numbers will be displayed for at least 3 minutes. A long sound signal will be made when the numbers are initially displayed. A boat whose number is so displayed shall leave the racing area before the new preparatory signal. If she fails to do so, she will be scored DNE. This SI changes rule 63.1. The race committee may also broadcast numbers on VHF.

**15.2** Before the starting signal, the racing area is defined as the area within 100 metres of the start line. After the starting signal, the racing area is the area within an imaginary line drawn 100 metres outside any point where a boat might sail during normal racing and includes the area bounded by marks 1 and 2 at all times when any boat is still racing.

## **16 Change of the next leg of the course.**

To change the next leg of the course, the race committee will lay a new mark (or the finishing line) and remove the original mark as soon as practicable. When in a subsequent change a new mark is replaced it will be replaced by an original mark.

## **17 The Finish**

**17.1** The finishing line will be between a staff displaying a blue flag on the race committee boat and the finishing mark.

**17.2** The course may be shortened by the display of flag T at the gate accompanied by repetitive sound signals. When flag T is so displayed, boats after passing through the gate shall sail to the finishing line to finish. This changes racing signals and rule 32. Flag T will also be displayed on the race committee boat positioned on the finishing line.

## **18 Penalty system**

Rules 44.1 and 44.2 are changed so that only one turn, including one tack and one gybe, is required.

## **19 Time limits**

Boats failing to finish within 15 minutes after the first boat in her group sails the course and finishes will be scored Did Not Finish. This changes rule 35, A4 and A5.

## **20 Protests and requests for redress**

**20.1** Protest forms are available at the race office. Protests and requests for redress or reopening shall be delivered there within the protest time limit. The protest time limit is 60 minutes after the last boat has finished the last race of the day on his course. The same time limit applies to protests by the race committee

and jury about incidents they observe in the racing area and to requests for redress. This changes rules 61.3 and 62.2.

**20.2** Notices will be posted within 30 minutes of the protest time limit to inform competitors of hearings in which they are parties or witnesses. Hearings will take place in the jury room located on the ground floor of the Royal Torbay Yacht Club.

**20.3** Notices of protests by the race committee or jury will be posted to inform boats under rule 61.1 (b) within the time limit stated in S.I. 20.1.

**20.4** Breaches of instructions 2, 3, 6.2, 23.1, 24, 26, 27, 28, will not be grounds for protest by a boat. This changes rule 60.1 (a). Penalties for these breaches may be less than disqualification if the jury so decides.

**20.5** On the last day of the qualifying series and on the last scheduled day of racing (20 May), a request for reopening a hearing shall be delivered:

(a) Within the protest time limit if the party requesting reopening was informed of the decision on the previous day.

(b) No later than 30 minutes after the party requesting reopening was informed of the decision on that day.

(c) If no racing has taken place on that day, no later than 30 minutes after signal 'AP over A' is displayed ashore.

This changes Rule 66.

**20.6** On the last day of the qualifying series and on the last scheduled day of racing (20 May), a request for redress from a jury decision shall be delivered no later than 30 minutes after the decision was posted. This changes Rule 62.2.

**20.7** Decisions of the jury will be final as provided in rule 70.5.

## **21 Arbitration System**

**21.1** As an alternative to a complete protest hearing by the jury for an alleged breach of a rule of Part 2 or rule 31, competitors may be given the choice of using an arbitration system. A condition for this is that the parties that are present at the time scheduled for the hearing agree to accept the decision of the arbitrators. The arbitration system changes rules 63 and 64.

**21.2** The arbitrators will be two members of the jury. They will take the evidence of the parties and give their opinion as to any rule breaches. This opinion will be binding as a protest decision on the parties. However, the hearing may be reopened under rule 66. If a party to a hearing asks for a reopening and the hearing is reopened, the penalty, if any, will be DSQ. If the arbitrators refer the case to the full jury, or the jury initiates a reopening, the penalty will be the penalty prescribed in instruction 21.3 or a greater penalty.

**21.3** If the arbitrators penalise a boat, the penalty will be a scoring penalty of 25% (rounded up to the next whole number) of the number of boats in the boat's assigned group. See rule 44.3(c).

**21.4** If, at the time of offering the arbitration system to the parties, any of the parties refuse to accept the system, the protest will be heard by the full jury and the penalty score becomes DSQ or more (DNE).

## **22 Scoring**

**22.1** The Championship will be scored as provided in RRS Appendix A using the Low Point System.

**22.2** A total of 3 races are required to constitute a Championship.

**22.3** A boat's worst score from the qualifying series will be excluded to calculate the division into the final series groups if there are four or more qualifier races to count.

**22.4** A boat's worst score from the final series will be excluded if there are four or more races to count.

**22.5** A boat's final score will be the total of her scores from the qualifying and final series after the worst scores have been excluded in accordance with 22.3 and 22.4 above.

**22.6** Gold group scores will be ranked above Silver group scores in deciding overall Championship positions.

**22.7** To request correction of an alleged error in posted race or series results, a boat may complete a scoring enquiry form available at the race office and submit to the race office within one hour of race or series results being posted.

## **23 Safety Regulations**

**23.1** A boat that retires from a race shall notify the race committee as soon as possible.

**23.2** Rule 40 will apply to each competitor at all times, except when made fast in her berth. This changes rule 40.

## **24 Official Boats**

### **Official boats may display flags or boards as follows:**

Committee boats.	A board displaying 'Course A' or 'Course B'
Mark laying boats.	Yellow flag with black M
Jury boats.	White flag with black J
Official patrol boats.	Orange flag with black numbers
Press boats.	White flag with black P
Competitor support boat.	Orange flag with white Numbers



## **25 Support boats**

**25.1** Except under the direction of the race committee and when participating in rescue operations, coach and support boats shall stay outside a prohibited zone extending 150 metres from any competitor, mark or committee boat from the time of the Preparatory Signal for a start until all boats have finished or the race committee signals a postponement or abandonment. If a general recall is signalled coach and support boats are not permitted in the prohibited zone.

**25.2** Competitors affiliated to or associated with a coach or support boat that infringes SI 25.1 may be penalised (by the addition of points in accordance with rule 44.3(c)) by the jury.

**25.3** Coach and support boats shall be registered at the race office ALL SUPPORT BOATS MUST HAVE THE FOLLOWING PAPERS: INSURANCE AND ID OF THE DRIVER. They shall conspicuously display a flag allocated by the organising authority at all times while afloat.

## **26 Trash Disposal**

Boats shall not put trash in the water. Trash may be placed aboard support and race committee boats.

## **27 Berthing**

Boats shall be kept in allocated berthing areas in the Harbour

## **28 Haul out restrictions**

Boats shall not be hauled out during the championship except with and according to the permission of the race committee.

## **29 Diving equipment and Plastic Pools**

Underwater breathing apparatus and plastic pools or their equivalent shall not be used around boats between the preparatory signal for the first race and the end of the championship. Consent to underwater examination of damage may be granted on application to the jury.

## **30 Radio Communication**

Except in an emergency a boat shall neither make radio transmissions while racing nor receive communications not available to all boats. This restriction also applies to mobile telephones. The race committee may communicate on VHF channel 72 course A (yellow) and VHF channel 77 course B (orange).

### **31 Prizes**

Prizes will be assigned to the first 6 boats of the Gold Fleet and to the first 3 boats of the Silver Fleet

### **32 Disclaimer of Liability**

**32.1** Royal Torbay Yacht Club, the Laser SB3 World Council and their officers, members and volunteers do not accept liability for loss of life or property, or personal injury or damage caused by or arising out of the 2011 World Championship, and competitors take part in the championship entirely at their own risk. (See Notice of Race Clause 20).

**32.2** The establishment of the notice of race and the sailing instructions in no way limits or reduces the complete and unlimited responsibilities of competitors being solely and entirely responsible for the management of a boat they are sailing.

**32.3** It is the sole responsibility of each nominated skipper to decide to participate in a race or continue racing.

### **33 Insurance**

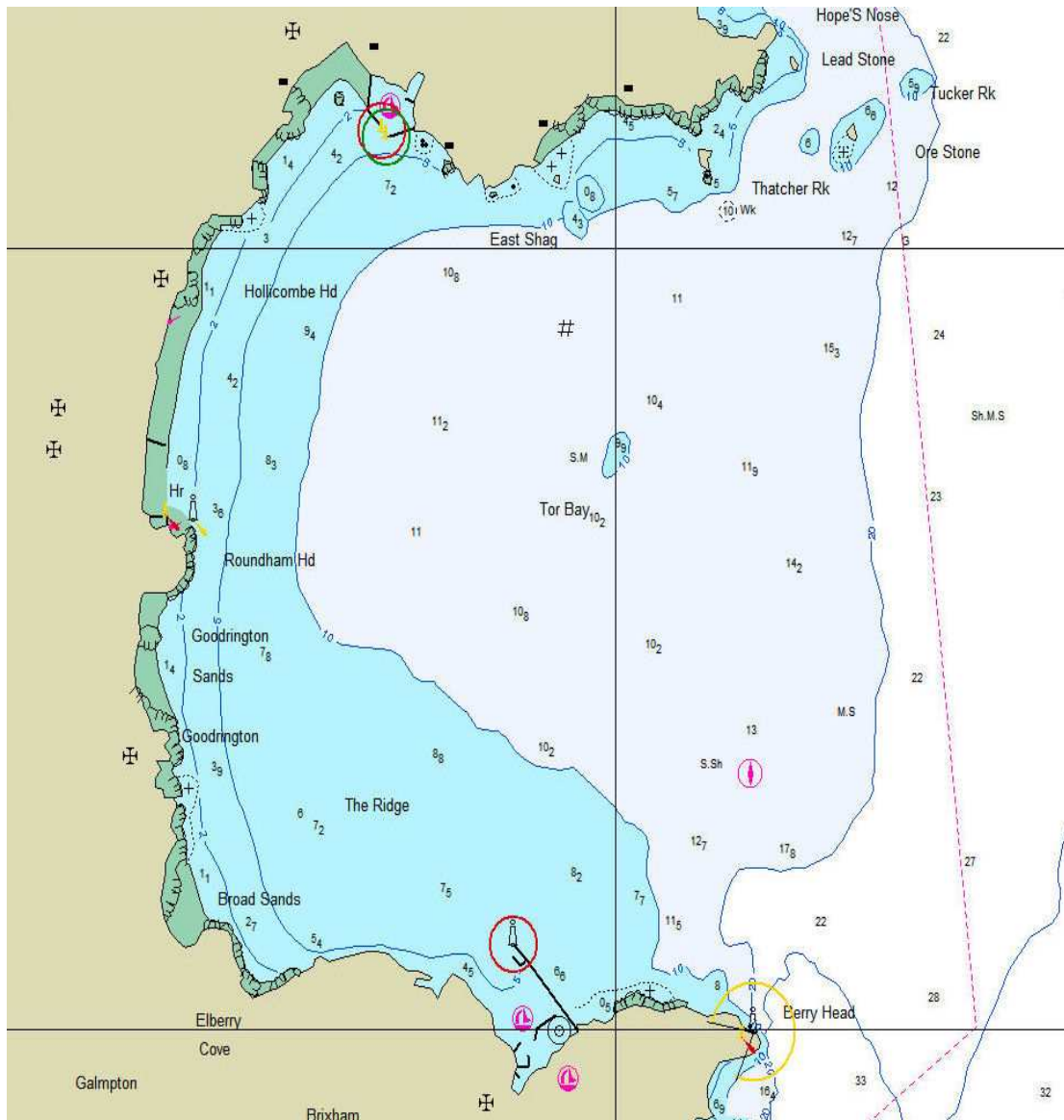
A skipper is wholly and exclusively responsible for third party liability insurance on the boat that he or she is sailing. A competitor is wholly and exclusively responsible for his or her personal accident and health insurance. (See Notice of Race Clause 21).

# 2011 LASER SB3 WORLD CHAMPIONSHIP

## Attachment "1" to Sailing Instructions

### Racing Area

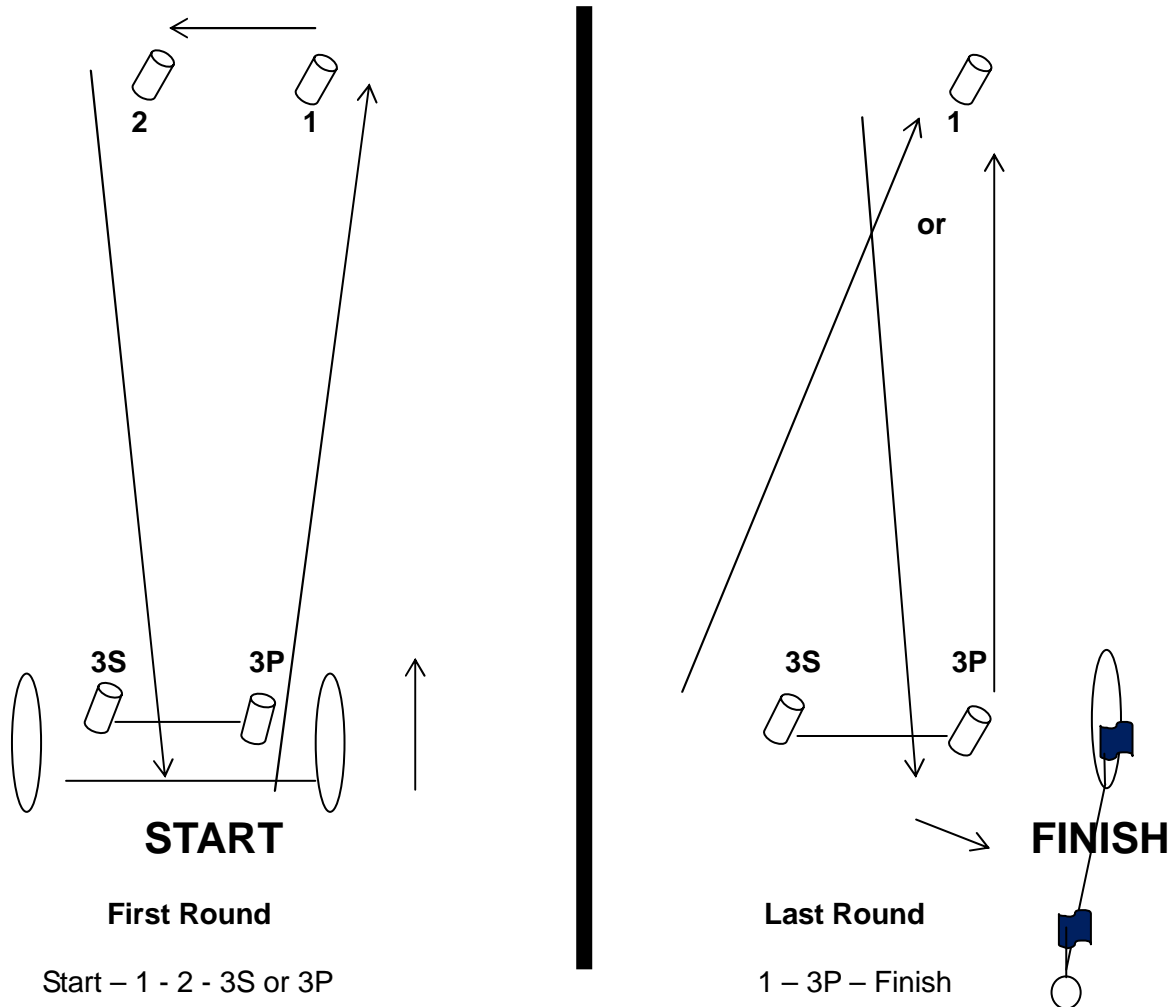
### Not to Scale



# 2011 LASER SB3 WORLD CHAMPIONSHIP

## ATTACHMENT "2" TO SAILING INSTRUCTIONS

### Course Diagram not to Scale



Marks 1, 2, 3S and 3P will be **YELLOW** inflated cylindrical buoys for course 'A' and **ORANGE** inflated cylindrical buoys for course 'B'. The change of course marks referred to in SI 16 will be orange for course 'A' and yellow for course 'B'.

Note: The gate marks 3S and 3P may not be laid until after the start of the race.